



# CHAPLIN COMMUNITY PARK

TOWN OF HILTON HEAD ISLAND // JUNE 2023  
PARK MASTER PLAN REVIEW

**MKSK**

# PROJECT PROCESS





# WHERE WE STARTED

## PREVIOUS PLAN | WHAT WE HEARD

- CREATE IMPACTFUL AND MEMORABLE PARK MOMENTS - A SENSE OF PLACE
- BURKES BEACH ROAD AND CASTNET DRIVE TO FEEL LIKE A ROAD THROUGH A PARK, SLOWING TRAFFIC AND INCREASING SAFETY
- DISTRIBUTE PARKING DEMANDS ACROSS SITE
- DEVELOP GATEWAYS INTO THE PARK
- BALANCE PROPOSED PROGRAM WITH EXISTING NATURAL RESOURCE
- CONSIDER ADAPTIVE REUSE OF EXISTING PARK INFRASTRUCTURE AND EXISTING DEVELOPED AREAS
- EMBRACE FOLLY, BEACHES, AND NATURAL RESOURCES AS PARK AMENITIES
- PROVIDE SAFE PEDESTRIAN CONNECTION TO CHAPLIN LINEAR PARK
- BALANCE IMPROVED BURKES BEACH ACCESS WITH QUIET NEIGHBORHOOD CHARACTER
- BLEND NEIGHBORHOOD PARK AMENITIES WITH ISLAND-WIDE PARK PROGRAM





# PRELIMINARY PLAN

FEBRUARY 2023





# PERSPECTIVE RENDERING

FEBRUARY 2023



BURKES BEACH

MULTI-USE FIELDS

MULTI-USE FIELDS

PARKING

DESTINATION PLAYGROUND

MULTI-USE PARK FACILITY

FOOD TRUCK PLAZA

PATHWAY



# EXISTING CONDITIONS

- BALANCE ADAPTIVE REUSE OF EXISTING PARK INFRASTRUCTURE AND EXISTING DEVELOPED AREAS WITH THE DEVELOPMENT OF A NEW PARK PLAN





# EXISTING CONDITIONS

- BALANCE ADAPTIVE REUSE OF EXISTING PARK INFRASTRUCTURE AND EXISTING DEVELOPED AREAS WITH THE DEVELOPMENT OF A NEW PARK PLAN
- RETAIN EXISTING MULTI-USE FIELDS AND TENNIS FACILITIES
- EXPAND ON EXISTING PARKING AREAS
- REIMAGINE THE PLAYGROUND IN THE EXISTING LOCATION
- RELOCATE EXISTING BASKETBALL COURTS TO ALLOW FOR ADDITIONAL VEHICULAR PARKING





# WHAT WE HEARD

- EXPLORE INCLUDING A COMMUNITY POOL FACILITY





# WHAT WE HEARD

- EXPLORE INCLUDING A COMMUNITY POOL FACILITY
- REVIEW INTEGRATING (24) PICKLEBALL COURTS, (4) PADEL COURTS, AND PRESERVING EXISTING TENNIS FACILITIES





# WHAT WE HEARD

- EXPLORE INCLUDING A COMMUNITY POOL FACILITY
- REVIEW INTEGRATING (24) PICKLEBALL COURTS, (4) PADEL COURTS, AND PRESERVING EXISTING TENNIS FACILITIES
- ANCHOR THE CORNER OF CASTNET DR. AND SINGLETON BEACH RD. WITH THE BEACH OPERATIONS FACILITY





# WHAT WE HEARD

- EXPLORE INCLUDING A COMMUNITY POOL FACILITY
- REVIEW INTEGRATING (24) PICKLEBALL COURTS, (4) PADEL COURTS, AND PRESERVING EXISTING TENNIS FACILITIES
- ANCHOR THE CORNER OF CASTNET DR. AND SINGLETON BEACH RD. WITH THE BEACH OPERATIONS FACILITY
- RELOCATE (1) BASKETBALL COURT INTO THE CORE OF THE PARK





# WHAT WE HEARD

- EXPLORE INCLUDING A COMMUNITY POOL FACILITY
- REVIEW INTEGRATING (24) PICKLEBALL COURTS, (4) PADEL COURTS, AND PRESERVING EXISTING TENNIS FACILITIES
- ANCHOR THE CORNER OF CASTNET DR. AND SINGLETON BEACH RD. WITH THE BEACH OPERATIONS FACILITY
- RELOCATE (1) BASKETBALL COURT INTO THE CORE OF THE PARK
- PROVIDE SAFE PEDESTRIAN CROSSINGS AT WILLIAM HILTON PARKWAY IN COORDINATION WITH CHAPLIN LINEAR PARK IMPROVEMENTS





# ALTERNATES

- **ALTERNATE 1:** PICKLEBALL AND PADEL INTEGRATED INTO DESIGN
- **ALTERNATE 2:** COMMUNITY POOL FACILITY INTEGRATED INTO DESIGN
- **ALTERNATE 3 / 4:** PICKLEBALL, PADEL, AND COMMUNITY POOL FACILITY INTEGRATED INTO DESIGN





# BASE PLAN

- PRESERVE EXISTING TENNIS FACILITIES
- ANCHOR THE CORNER OF CASTNET DR. AND SINGLETON BEACH RD. WITH THE BEACH OPERATIONS FACILITY
- RELOCATE (1) BASKETBALL COURT INTO THE CORE OF THE PARK





# ALTERNATE 1

- CONSOLIDATE RACQUET FACILITIES NEAR SINGLETON BEACH ROAD
- LOCATE A COMMUNITY POOL FACILITY AT AN ALTERNATE LOCATION





# ALTERNATE 1



CHAPLIN COMMUNITY PARK  
JUNE 2023





# ALTERNATE 1

## SUPPORTING AMENITIES



CHAPLIN COMMUNITY PARK  
JUNE 2023





# ALTERNATE 2

- PROVIDE COMMUNITY POOL FACILITY SEPARATED FROM CORE OF PARK ACTIVITY
- LOCATE PICKLEBALL AND PADEL AT AN ALTERNATE LOCATION





# ALTERNATE 2



CHAPLIN COMMUNITY PARK  
JUNE 2023



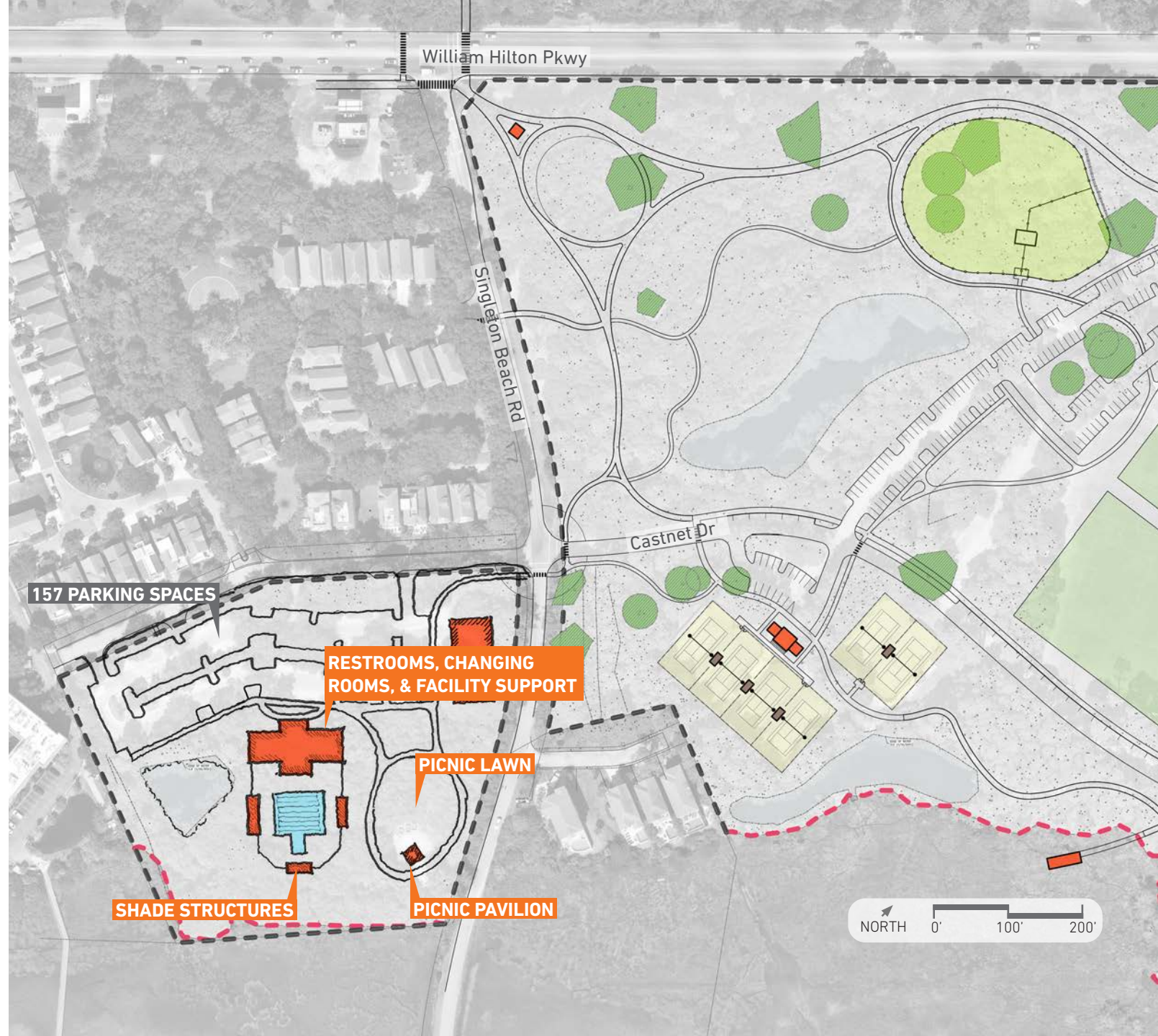


# ALTERNATE 2

## SUPPORTING AMENITIES



CHAPLIN COMMUNITY PARK  
JUNE 2023





# ALTERNATE 3

- PROVIDE COMMUNITY POOL FACILITY SEPARATED FROM CORE OF PARK ACTIVITY
- CONSOLIDATE RACQUET FACILITIES WITHIN THE CORE OF THE PARK
- SHIFT LOCATION OF DOG PARK





# ALTERNATE 3

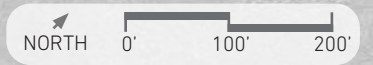


CHAPLIN COMMUNITY PARK  
JUNE 2023



HILTON HEAD ISLAND BEACH  
OPERATIONS FACILITY

COMMUNITY POOL FACILITY  
(25 METER)





# ALTERNATE 3

## SUPPORTING AMENITIES



CHAPLIN COMMUNITY PARK  
JUNE 2023



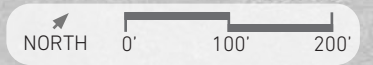
157 PARKING SPACES

RESTROOMS, CHANGING ROOMS, & FACILITY SUPPORT

PICNIC LAWN

SHADE STRUCTURES

PICNIC PAVILION





# ALTERNATE 3





# ALTERNATE 3

## SUPPORTING AMENITIES





# ALTERNATE 4

- PROVIDE COMMUNITY POOL FACILITY WITHIN THE CORE OF THE PARK
- CONSOLIDATE RACQUET FACILITIES NEAR SINGLETON BEACH ROAD
- SHIFT LOCATION OF DOG PARK





# ALTERNATE 4



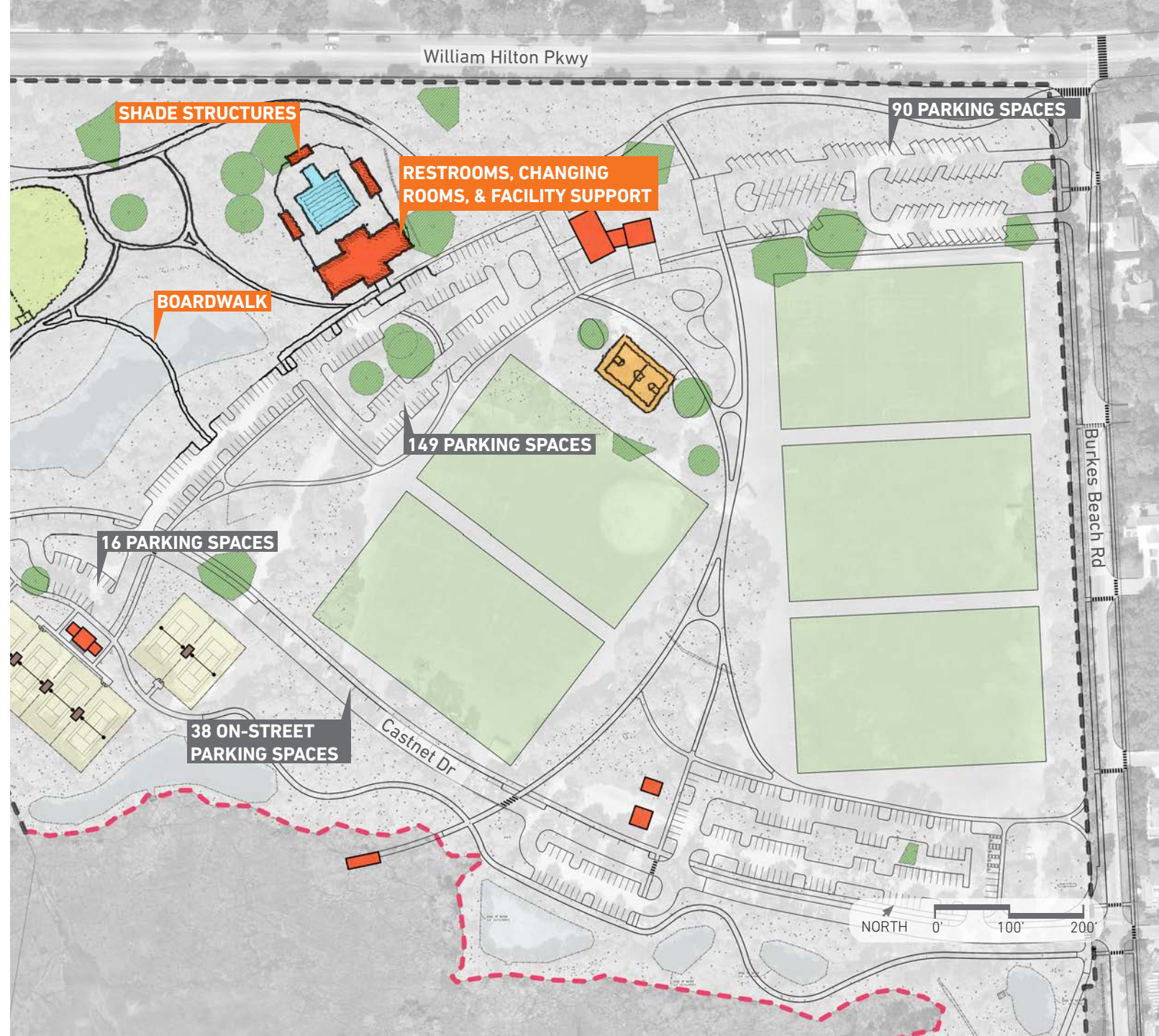


# ALTERNATE 4

## SUPPORTING AMENITIES



CHAPLIN COMMUNITY PARK  
JUNE 2023





# ALTERNATE 4



CHAPLIN COMMUNITY PARK  
JUNE 2023





# ALTERNATE 4

## SUPPORTING AMENITIES



CHAPLIN COMMUNITY PARK  
JUNE 2023





# BASE PLAN

- EXISTING PARKING: 382 SPACES  
PARKING PROVISION: 589 SPACES  
PARKING DEMAND: 509 SPACES  
(ASSUMES 80% OF TOTAL DEMAND)

## APA STANDARDS:

MULTI-USE FACILITY:	19 SPACES
PLAYGROUND:	10 SPACES
MULTI-USE FIELDS:	200 SPACES
BEACH:	300 SPACES
BASKETBALL COURT:	6 SPACES
DOG PARK:	15 SPACES
BEACH OPERATIONS:	38 SPACES
TENNIS FACILITIES:	18 SPACES
NATURE PARK:	30 SPACES

- PEAK DEMAND IS EXPECTED TO BE WEEKEND MORNINGS IN THE SUMMER





# ALTERNATE 1

- CONSOLIDATE RACQUET FACILITIES NEAR SINGLETON BEACH ROAD
- LOCATE A COMMUNITY POOL FACILITY AT AN ALTERNATE LOCATION
- EXISTING PARKING: 382 SPACES  
PARKING PROVISION: 589 SPACES  
PARKING DEMAND: 620 SPACES

(ASSUMES 80% OF TOTAL DEMAND)

## APA STANDARDS:

MULTI-USE FACILITY:	19 SPACES
PLAYGROUND:	10 SPACES
MULTI-USE FIELDS:	200 SPACES
BEACH:	300 SPACES
BASKETBALL COURT:	6 SPACES
DOG PARK:	15 SPACES
BEACH OPERATIONS:	38 SPACES
TENNIS FACILITIES:	18 SPACES
NATURE PARK:	30 SPACES
PICKLEBALL:	120 SPACES
PADEL:	20 SPACES





# ALTERNATE 2

- PROVIDE COMMUNITY POOL FACILITY SEPARATED FROM CORE OF PARK ACTIVITY
- LOCATE PICKLEBALL AND PADEL AT AN ALTERNATE LOCATION
- EXISTING PARKING: 382 SPACES  
PARKING PROVISION: 589 SPACES  
PARKING DEMAND: 589 SPACES

(ASSUMES 80% OF TOTAL DEMAND)

## APA STANDARDS:

MULTI-USE FACILITY:	19 SPACES
PLAYGROUND:	10 SPACES
MULTI-USE FIELDS:	200 SPACES
BEACH:	300 SPACES
BASKETBALL COURT:	6 SPACES
DOG PARK:	15 SPACES
BEACH OPERATIONS:	38 SPACES
TENNIS FACILITIES:	18 SPACES
NATURE PARK:	30 SPACES
POOL FACILITY:	100 SPACES





# ALTERNATE 3

- PROVIDE COMMUNITY POOL FACILITY SEPARATED FROM CORE OF PARK ACTIVITY
- CONSOLIDATE RACQUET FACILITIES WITHIN THE CORE OF THE PARK
- EXISTING PARKING: 382 SPACES  
PARKING PROVISION: 589 SPACES  
PARKING DEMAND: 700 SPACES

(ASSUMES 80% OF TOTAL DEMAND)

## APA STANDARDS:

MULTI-USE FACILITY:	19 SPACES
PLAYGROUND:	10 SPACES
MULTI-USE FIELDS:	200 SPACES
BEACH:	300 SPACES
BASKETBALL COURT:	6 SPACES
DOG PARK:	15 SPACES
BEACH OPERATIONS:	38 SPACES
TENNIS FACILITIES:	18 SPACES
NATURE PARK:	30 SPACES
POOL FACILITY:	100 SPACES
PICKLEBALL:	120 SPACES
PADEL:	20 SPACES





# ALTERNATE 4

- PROVIDE COMMUNITY POOL FACILITY WITHIN THE CORE OF THE PARK
- CONSOLIDATE RACQUET FACILITIES NEAR SINGLETON BEACH ROAD
- EXISTING PARKING: 382 SPACES  
PARKING PROVISION: 589 SPACES  
PARKING DEMAND: 700 SPACES

(ASSUMES 80% OF TOTAL DEMAND)

## APA STANDARDS:

MULTI-USE FACILITY:	19 SPACES
PLAYGROUND:	10 SPACES
MULTI-USE FIELDS:	200 SPACES
BEACH:	300 SPACES
BASKETBALL COURT:	6 SPACES
DOG PARK:	15 SPACES
BEACH OPERATIONS:	38 SPACES
TENNIS FACILITIES:	18 SPACES
NATURE PARK:	30 SPACES
POOL FACILITY:	100 SPACES
PICKLEBALL:	120 SPACES
PADEL:	20 SPACES





# ALTERNATES

- **ALTERNATE 1:** PICKLEBALL AND PADEL INTEGRATED INTO DESIGN
- **ALTERNATE 2:** COMMUNITY POOL FACILITY INTEGRATED INTO DESIGN
- **ALTERNATE 3 / 4:** PICKLEBALL, PADEL, AND COMMUNITY POOL FACILITY INTEGRATED INTO DESIGN

