

Parking Lots:

Autobahns provide the best lighting for the safety of you and your customers.

Roadways:

In residential areas, the Baltimore (Westbury Park), Salem (Hampton Lake) or Hagerstown (Baynard Park) is recommended.

Backyards & Fields:

A Standard option is offered for yards and Flood Lights for fields (not shown). These lights are available in areas without community or government restrictions.

Approval Forms:

Packets are generated by PECI, for both the Customer and local governing bodies, and contain approval forms. It is the customer's responsibility to submit the package to the appropriate governing body for approval **AND** to see that PECI receives the signed approval from the governing body.

Contracts:

Contracts are generated after signed approval forms are received by PECI. The original contract, signed by the customer, must be returned to PECI in order for staking, scheduling and construction of the lighting project to begin. Faxed contracts **CANNOT** be accepted. Material will **NOT** be ordered and work will **NOT** begin until PECI has a signed contract. Material delivery may take up to 12 weeks.

Aid To Construct:

Additional costs may include road bores, and/or additional PECI equipment, i.e. transformers, pedestals. This fee, if needed, must be paid in full prior to any construction.

Installation Charges:

Each pole location includes 100' of wire from any PECI energy source at no additional charge to the customer by use of mechanical trenching

methods. Any footage over 100' will be charged a fee per foot.

All light wire will be in schedule 40 conduit and must be buried at a minimum depth of 36". For parking lot or road crossings, sleeves must be schedule 40 conduit at a minimum depth of 36" and provided by the customer.

Poles:

PECI offers wood, fiberglass or aluminum poles at various heights for each option. Poles are set directly into soil, or on bases set directly into soil, at depths specified by manufacturer.

Operation:

All PECI lights are operated by a photocell, which turns the lights on at dusk and off at dawn.

Landscaping & Irrigation:

Any landscaping that must be removed for installation of the lights is the responsibility of the customer to remove and re-install as necessary. It is also the responsibility of the customer to locate irrigation pipe and any other customer owned buried equipment to avoid conflicts with the new installation.

Light Data:

Any data needed for the lights, i.e. costs, wattages, IES files, etc., may be obtained by calling any of the contacts listed at the New River Engineering office.

Contacts:

Roxane Tindal	843-208-5511
Katie Mock	843-208-5510

Revised 2/20/2018 RBT



LED OUTDOOR LIGHTING PROGRAM



BALTIMORE



LARGE AUTOBAHN



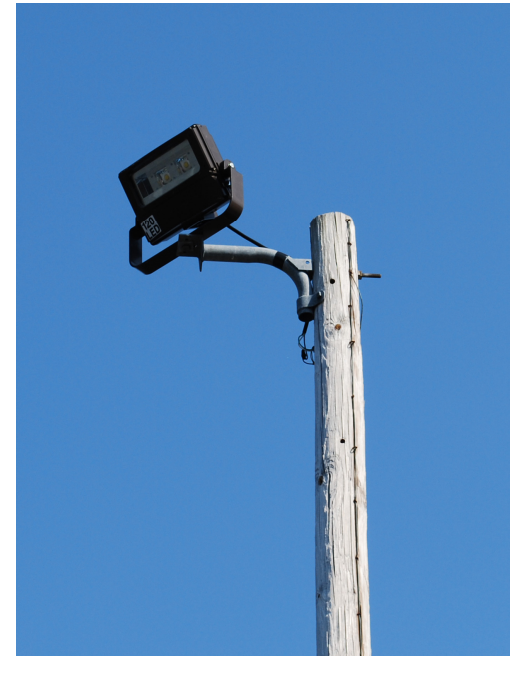
HAGERSTOWN



SALEM



SMALL AUTOBAHN



FLOOD