



CHAPLIN COMMUNITY PARK

TOWN OF HILTON HEAD ISLAND // FEBRUARY 2023

PARK MASTER PLAN REVIEW

MKSK

TOWN-OWNED PARKS

- CONSOLIDATE SPORT SPECIFIC RECREATION PROGRAM AS RECOMMENDED BY THE PARKS AND RECREATION MASTER PLAN



EXISTING CONDITIONS



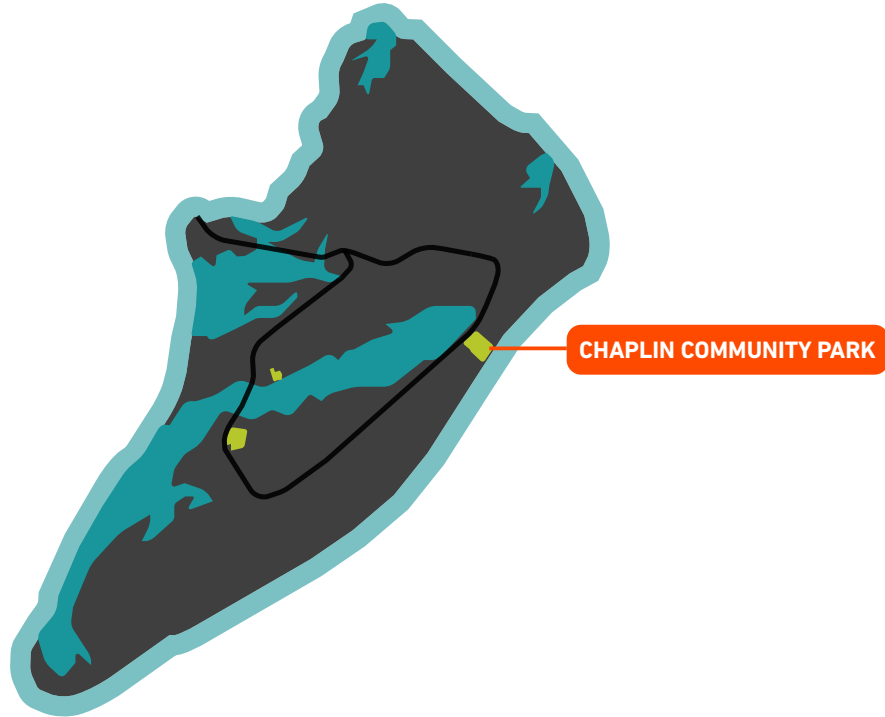
WHERE WE STARTED

PREVIOUS PLAN | WHAT WE HEARD

- CREATE IMPACTFUL AND MEMORABLE PARK MOMENTS - A SENSE OF PLACE
- BURKES BEACH ROAD AND CASTNET DRIVE TO FEEL LIKE A ROAD THROUGH A PARK, SLOWING TRAFFIC AND INCREASING SAFETY
- DISTRIBUTE PARKING DEMANDS ACROSS SITE
- DEVELOP GATEWAYS INTO THE PARK
- BALANCE PROPOSED PROGRAM WITH EXISTING NATURAL RESOURCE
- CONSIDER ADAPTIVE REUSE OF EXISTING PARK INFRASTRUCTURE AND EXISTING DEVELOPED AREAS
- EMBRACE FOLLY, BEACHES, AND NATURAL RESOURCES AS PARK AMENITIES
- PROVIDE SAFE PEDESTRIAN CONNECTION TO CHAPLIN LINEAR PARK
- BALANCE IMPROVED BURKES BEACH ACCESS WITH QUIET NEIGHBORHOOD CHARACTER
- BLEND NEIGHBORHOOD PARK AMENITIES WITH ISLAND-WIDE PARK PROGRAM



PROGRAM VALIDATION



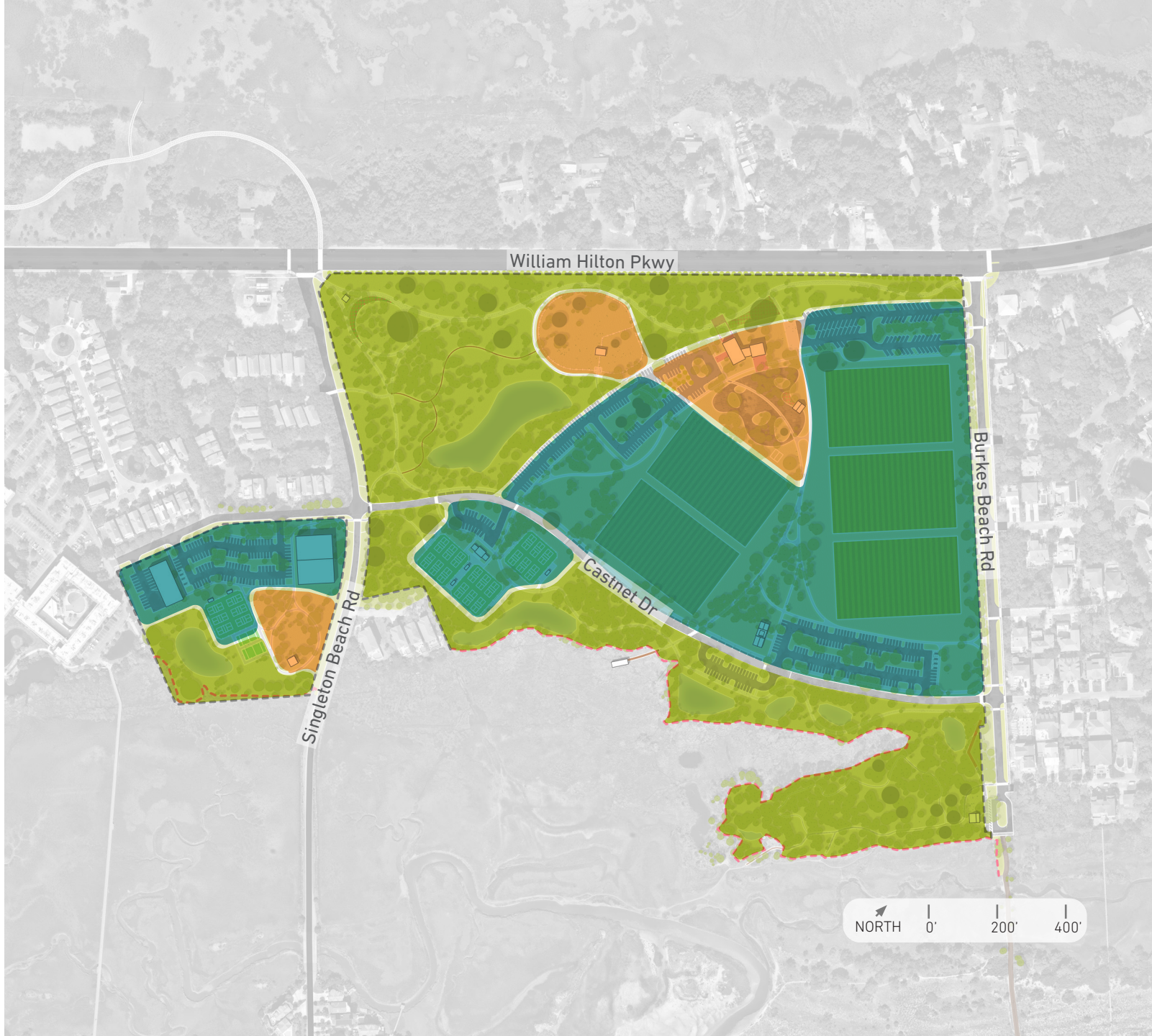
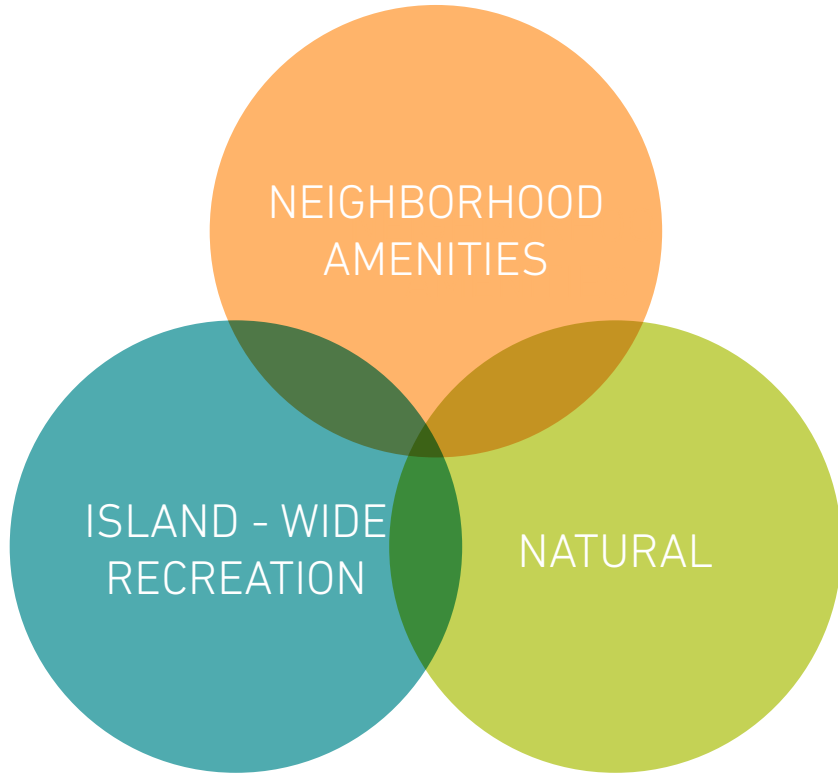
EXISTING FACILITIES

- 6 TENNIS COURTS
- 3 MULTI-USE FIELDS
- BASKETBALL
- TRAILS
- DOG PARK
- PLAYGROUND
- PICNIC PAVILIONS
- PARKING
- CONCESSIONS
- BEACH ACCESS
- 3 RESTROOMS

AMENDED PROGRAM FROM PARKS & RECREATION COMMUNITY ENGAGEMENT

- ADD 3 RESTROOMS
- REPURPOSE TENNIS COURTS WITH 24 PICKLEBALL COURTS
- ADD 2 MULTI-USE FIELDS
- ADD COVER TO BASKETBALL COURTS
- RE-IMAGINE DOG PARK
- ADD BEACH OPERATIONS CENTER
- REPLACE CONCESSIONS AND PLAZA
- IMPROVE BURKES BEACH DROP-OFF
- NEW DESTINATION PLAYGROUND
- EXPAND PARKING
 - TENNIS COURTS
 - SAND VOLLEYBALL COURTS
 - OBSERVATION TOWER
 - OUTDOOR CLASSROOM

PROGRAM COMPONENTS



CONCEPT PLAN



GATEWAYS

- CELEBRATE PARK GATEWAYS / DECISION POINTS
- PROVIDE AN INTUITIVE ENTRY AND SENSE OF ARRIVAL
- TELL THE STORY OF THE ISLAND HERITAGE AND THE CHAPLIN COMMUNITY
- CONNECT TO FUTURE CHAPLIN LINEAR PARK



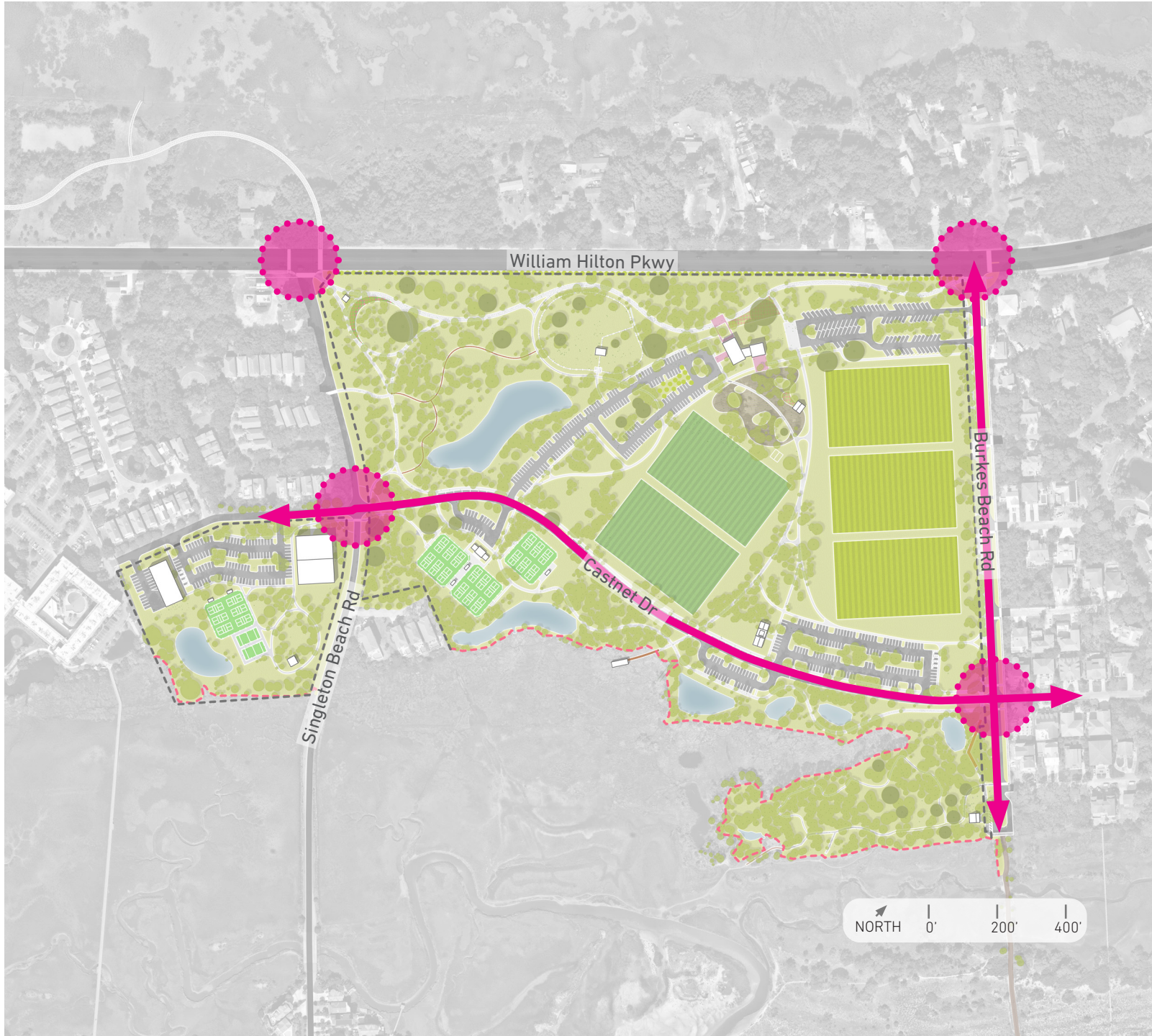
CASTNET DRIVE

- IMPROVE PEDESTRIAN ACCESS
- SHIFT PARKING LOTS AWAY FROM THE ROADWAY
- PRESERVE AND ENHANCE THE VIEWS TO THE FOLLY
- PROVIDE PARALLEL PARKING ON NORTH SIDE OF ROAD
- PROVIDE SENSE OF ARRIVAL INTO THE PARK - A PARK ROAD



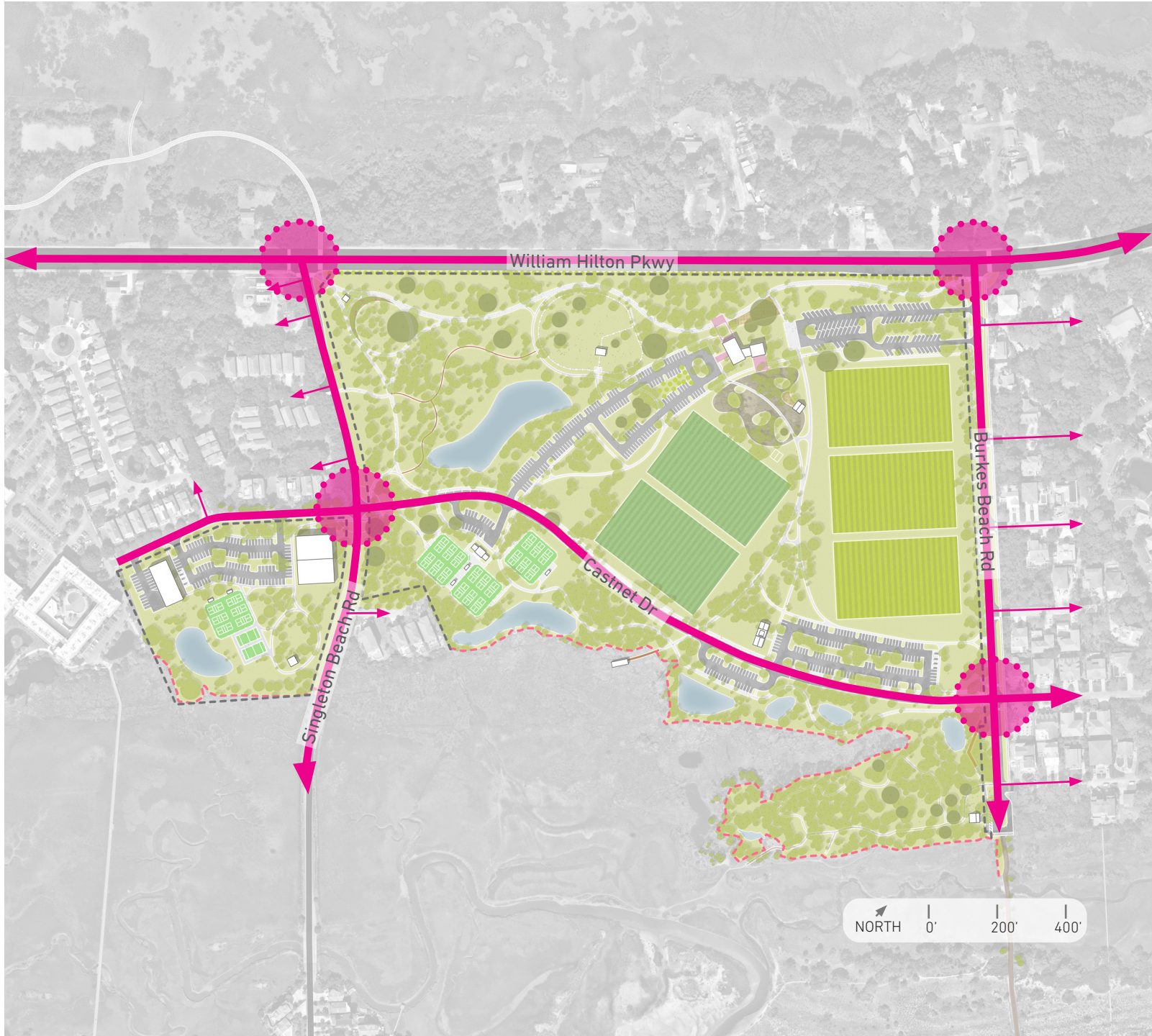
BURKES BEACH ROAD

- PROVIDE ENHANCED SAFE PEDESTRIAN CROSSINGS
- DEVELOP A DIRECT AND INTUITIVE PATHWAY CONNECTION FROM WILLIAM HILTON PARKWAY TO THE PARK AND BURKES BEACH
- NARROW DRIVE LANES TO REDUCE TRAFFIC SPEEDS



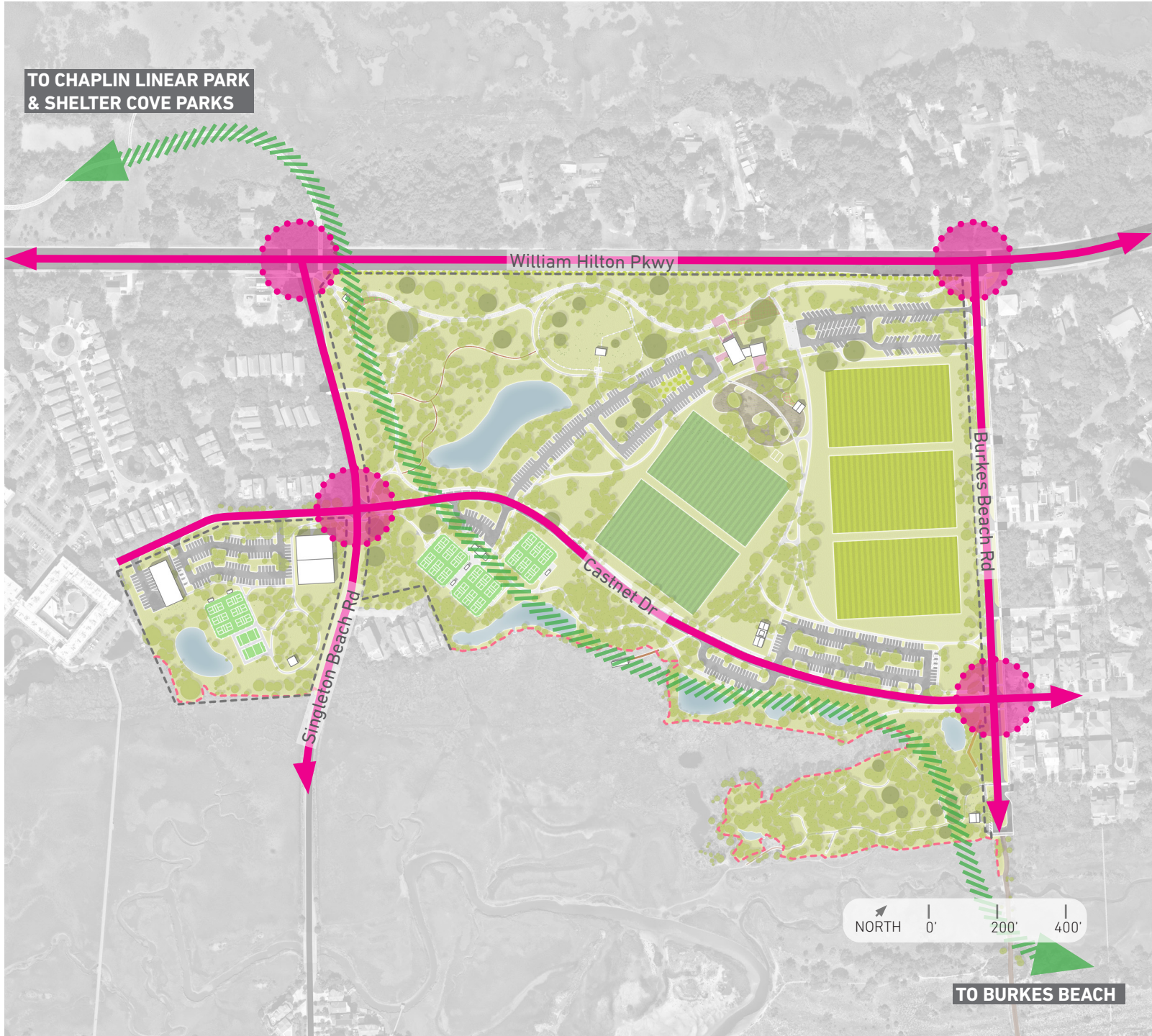
VEHICULAR CIRCULATION

- FUTURE IMPROVED INTERSECTION SAFETY AT WILLIAM HILTON PARKWAY IN COORDINATION WITH CORRIDORS PLANNING PROJECT
- ENHANCE STREETSCAPES TO PROVIDE SENSE OF ARRIVAL INTO THE PARK



NATURAL & HISTORICAL LANDSCAPES

- CONNECT ADJACENT NATURAL LANDSCAPES ALONG CHAPLIN LINEAR PARK
- CELEBRATE ISLAND HERITAGE



NATURAL & HISTORICAL LANDSCAPES

- SHARE THE STORY OF THE HISTORY / CULTURE OF BURKES BEACH AND SINGLETON BEACH
- CELEBRATE THE HERITAGE OF CHAPLIN HISTORIC NEIGHBORHOOD
- PROVIDE PLACES FOR PEOPLE TO GATHER
- DEVELOP IMPACTFUL AND MEANINGFUL COMMUNITY SPACE



PLACES TO GATHER



SHARE THE STORY

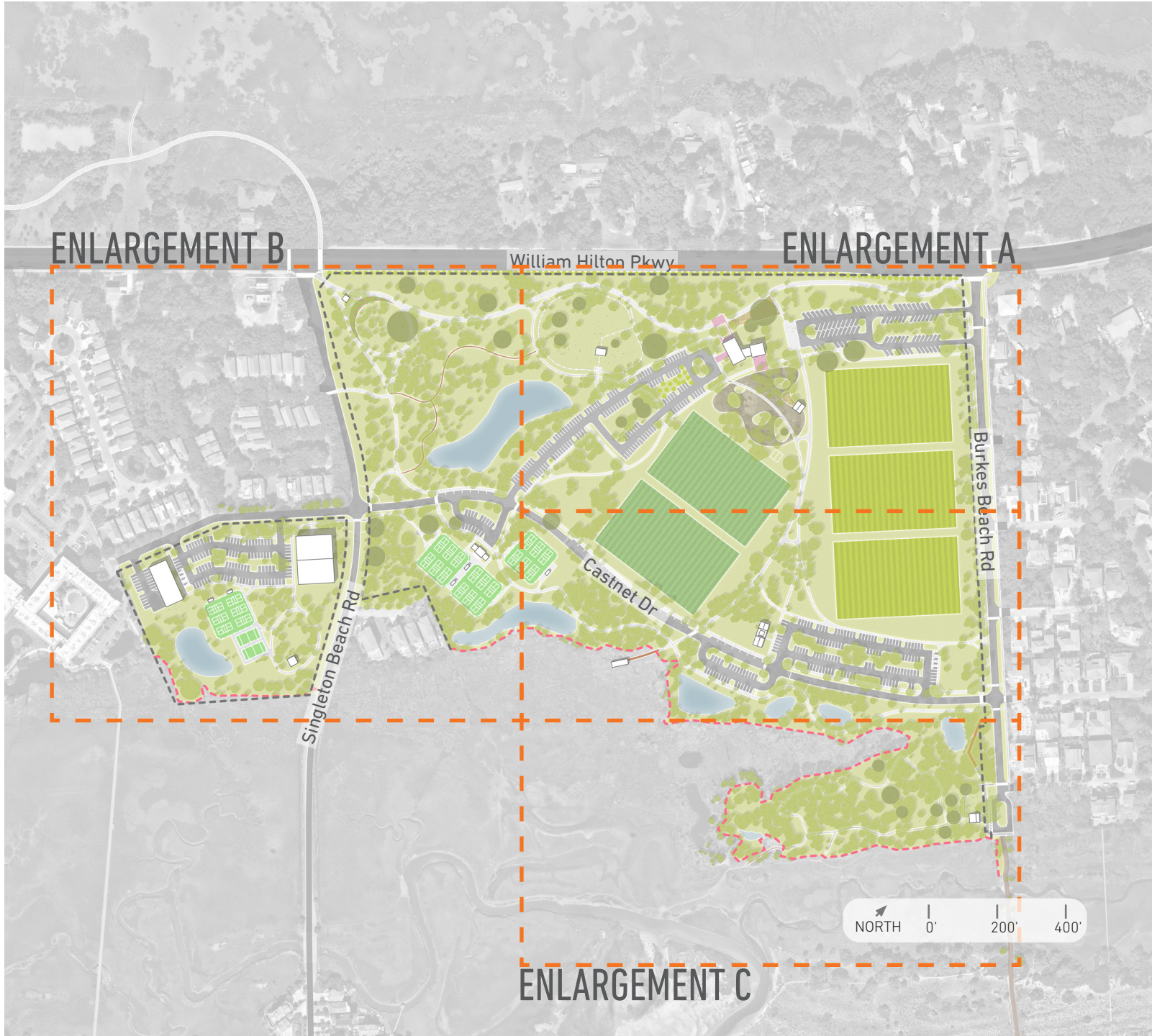


SHARE THE STORY



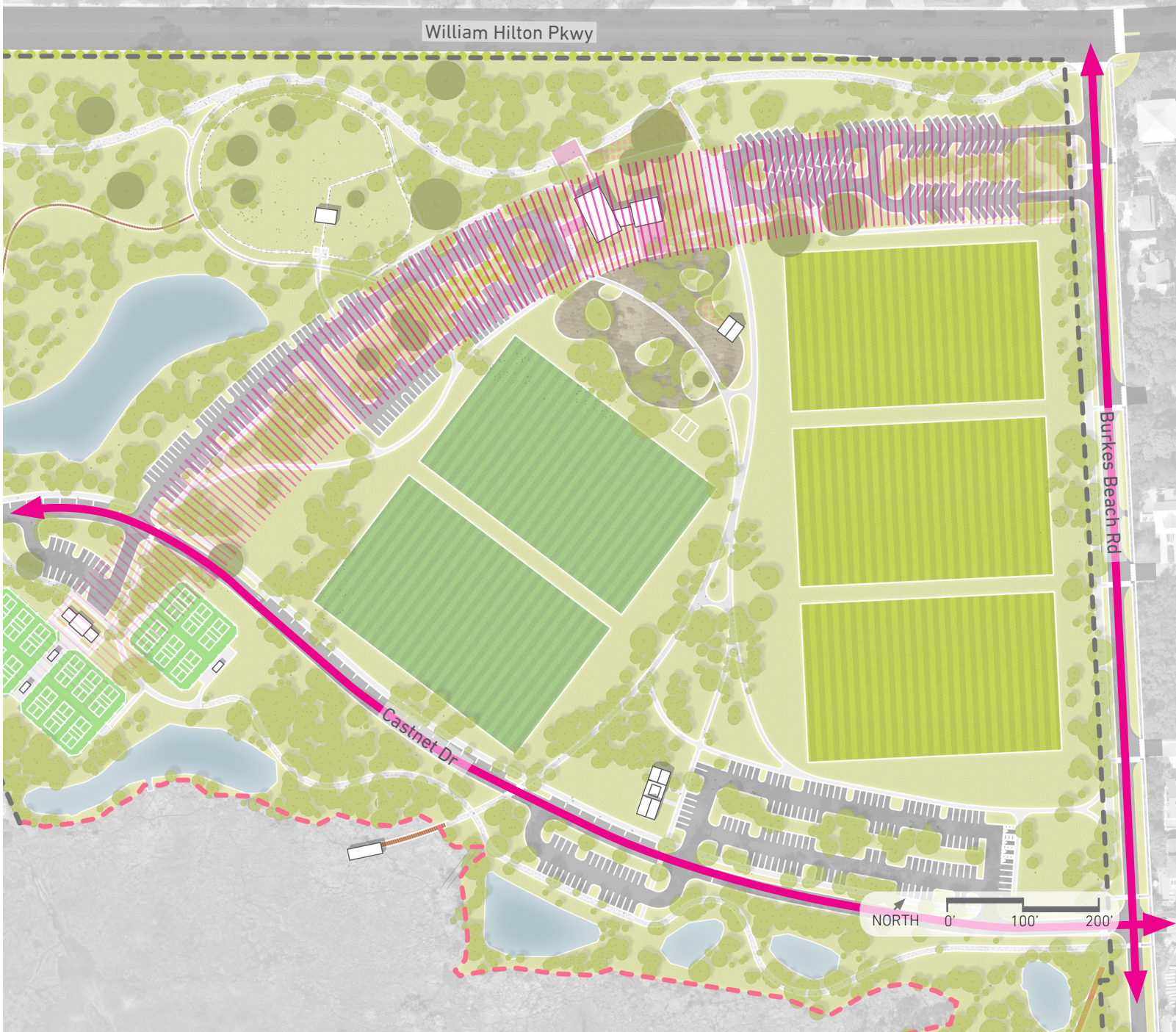
SHARE THE STORY

ENLARGEMENT PLANS



ANCHORING THE CORE OF THE PARK

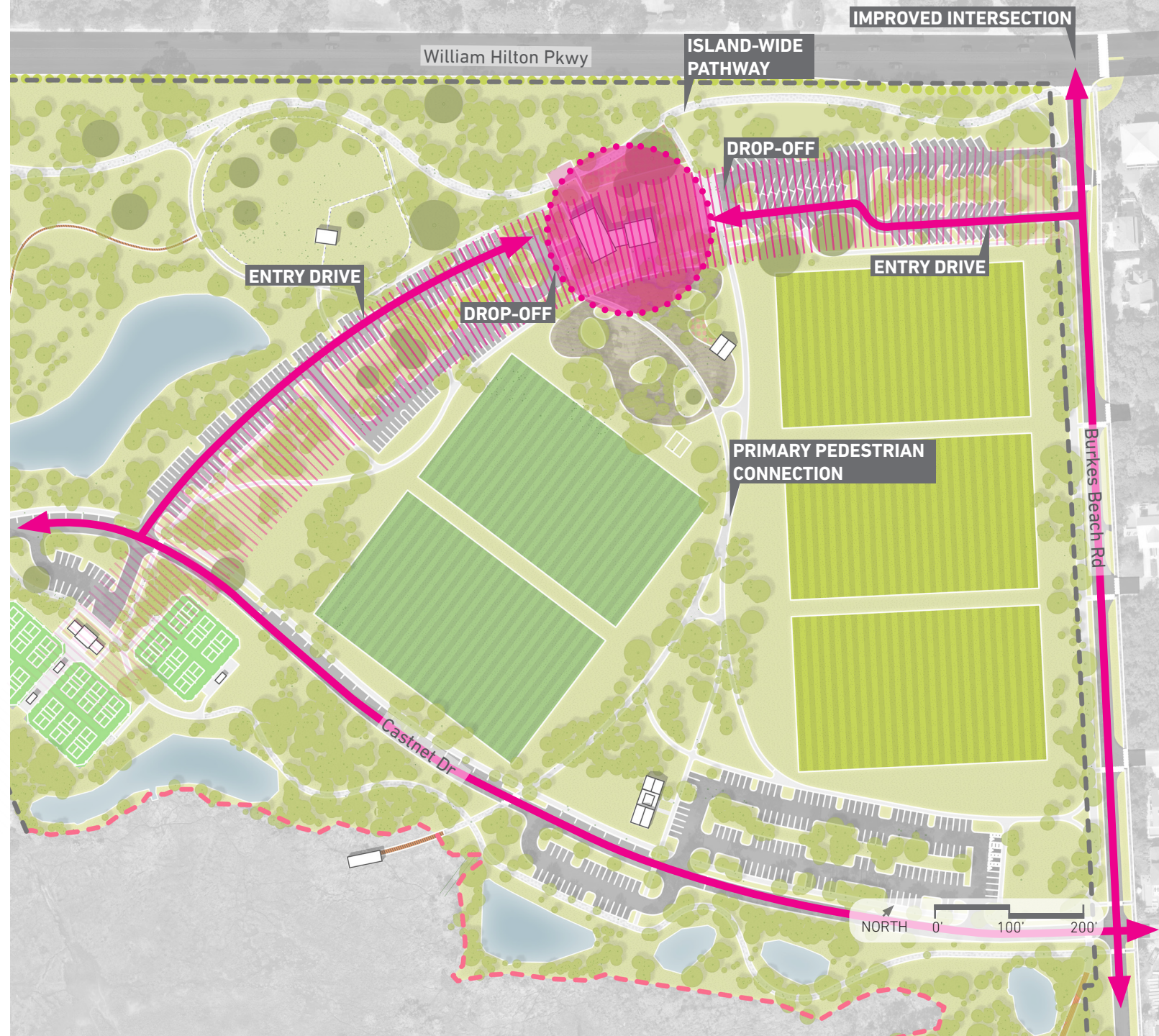
- ORGANIZE PARK AMENITIES, PARKING, AND PRIMARY CIRCULATION ALONG A CENTRAL SPINE
- DEVELOP A CORE OF ACTIVITY AND A SENSE OF PLACE AND ARRIVAL



ANCHORING THE CORE OF THE PARK

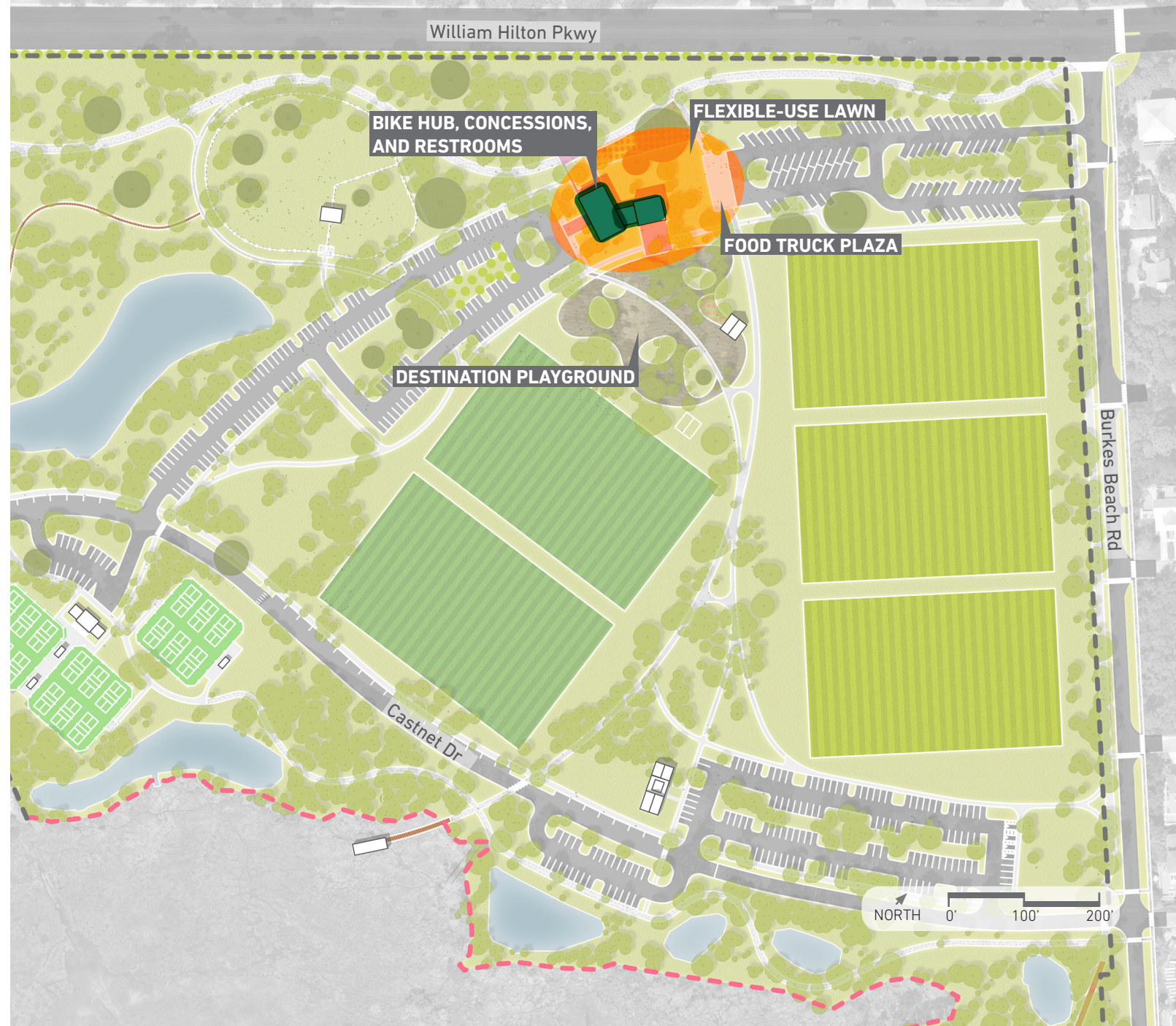


CHAPLIN COMMUNITY PARK
FEBRUARY 2023



ANCHORING THE CORE OF THE PARK

- PROVIDE SUPPORT AND AMENITIES FOR THE ISLAND-WIDE PATHWAY INCLUDING RESTROOMS, CONCESSIONS, AND A PLACE TO RELAX AND COOL DOWN
- DEVELOP A CENTRAL GATHERING SPACE FOR THE PARK WITH AN OPEN-AIR PAVILION, FOOD TRUCK PLAZA, FLEXIBLE-USE LAWN, AND MULTI-USE COMMUNITY SPACE



ANCHORING THE CORE OF THE PARK

ARCHITECTURAL CHARACTER

- DEVELOP A FAMILY OF COMPLIMENTARY ARCHITECTURE FOR ISLAND-WIDE PARK FACILITIES



MULTI-USE FIELDS

- REPURPOSE EXISTING OPEN SPACE FOR MULTI-USE FIELDS
- MAINTAIN USE AS DEBRIS MANAGEMENT SITE
- FULL-SIZED MULTI-USE FIELDS
GOALS, BLEACHERS, COVERED PLAYERS BENCHES, LIGHTS, ETC.



MULTI-USE FIELDS

SUPPORTING AMENITIES



CHAPLIN COMMUNITY PARK
FEBRUARY 2023



NEIGHBORHOOD PARK

SUPPORTING AMENITIES

- PROVIDE PLACES, ALONG THE ISLAND-WIDE PATHWAY FOR PEOPLE TO GATHER AND DISCOVER THE HERITAGE OF CHAPLIN HISTORIC NEIGHBORHOOD



NEIGHBORHOOD PARK

DESTINATION PLAYGROUND

- CONNECT THE STORY OF FOLLY AND DUNE LANDSCAPE



ACTIVE RECREATION



CHAPLIN COMMUNITY PARK
FEBRUARY 2023



ACTIVE RECREATION SUPPORTING AMENITIES



CHAPLIN COMMUNITY PARK
FEBRUARY 2023



ACTIVE RECREATION SUPPORTING AMENITIES

- CONNECT THE PARK ACROSS SINGLETON BEACH ROAD
- PROVIDE DIRECT AND INTUITIVE PEDESTRIAN CONNECTIONS TO PICKLEBALL COURTS



NEIGHBORHOOD PARK

SUPPORTING AMENITIES

- ENGAGE ISLAND-WIDE PATHWAY USERS WITH A WAYFINDING KIOSK, CONNECTING THE HISTORIC NEIGHBORHOODS
- REINFORCE THE CONNECTION AND WAYFINDING BETWEEN SHELTER COVE PARK, CHAPLIN LINEAR PARK, CHAPLIN COMMUNITY PARK, AND BURKES BEACH
- RESTORE PREVIOUSLY DISTURBED NATURAL AREAS



CHAPLIN COMMUNITY PARK
FEBRUARY 2023



BURKES BEACH

SUPPORTING AMENITIES

- IMPROVE BEACH DROP-OFF FUNCTION & AESTHETIC
- MINIMIZE VISUAL IMPACT OF DROP-OFF IMPROVEMENTS
- SUPPORT BEACH USE WITH RIGHT-SIZED & ARCHITECTURALLY APPROPRIATE RESTROOM FACILITY



BURKES BEACH

SUPPORTING AMENITIES

- SHARE THE STORY OF ISLAND HERITAGE, BURKES BEACH, AND THE CHAPLIN COMMUNITY
- CELEBRATE AND CONNECT TO THE FOLLY LANDSCAPE & ECOLOGY



CHAPLIN COMMUNITY PARK
FEBRUARY 2023



PERSPECTIVE RENDERING



BURKES BEACH

MULTI-USE FIELDS

MULTI-USE FIELDS

PARKING

DESTINATION PLAYGROUND

MULTI-USE PARK FACILITY

FOOD TRUCK PLAZA

PATHWAY

CONCEPT PLAN

